

## Item 8 – Appendix 7

### Rail network performance data

Main operators' performance data is summarised here.

Performance data is now reported to new 'to time' measures, more information about this is available here: <https://www.raildeliverygroup.com/punctuality.html> .

Key indicators used below are as follows:

Measure	Explanation
Time to 3	Percentage of Recorded Station Stops called at within 3 minutes of the planned time.
Cancelled	Services subject to cancellation (in full or in part).

Period 6 (P6) covers the four-weeks from 22 August 2021 to 18 September 2021.

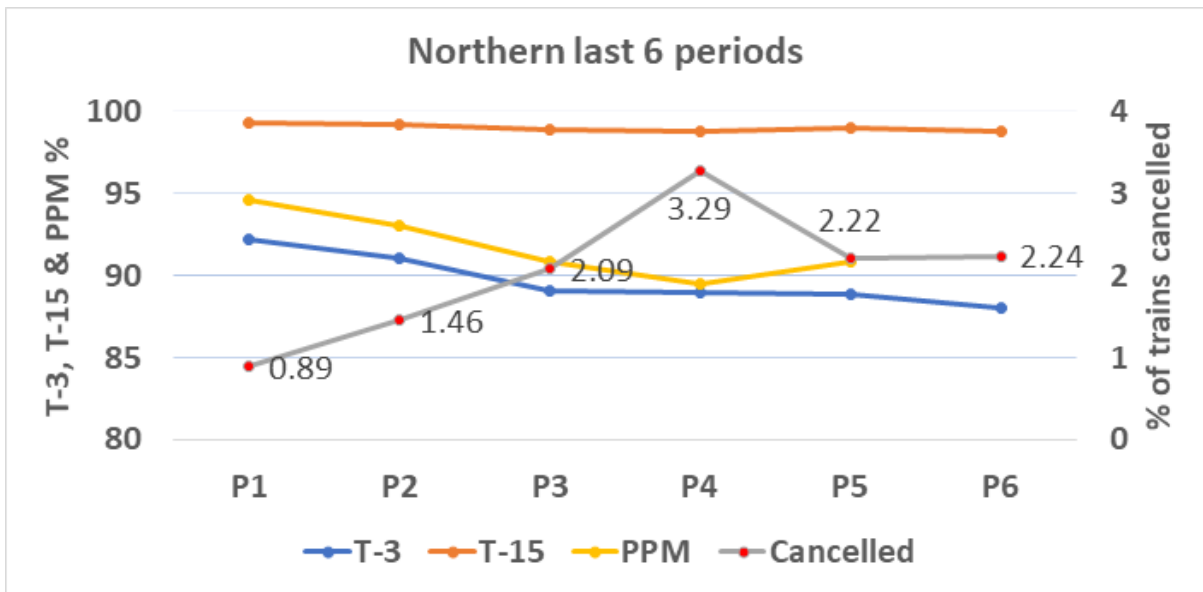
#### Northern

Northern operates most of the rail services in West Yorkshire. Headline performance is summarised below.

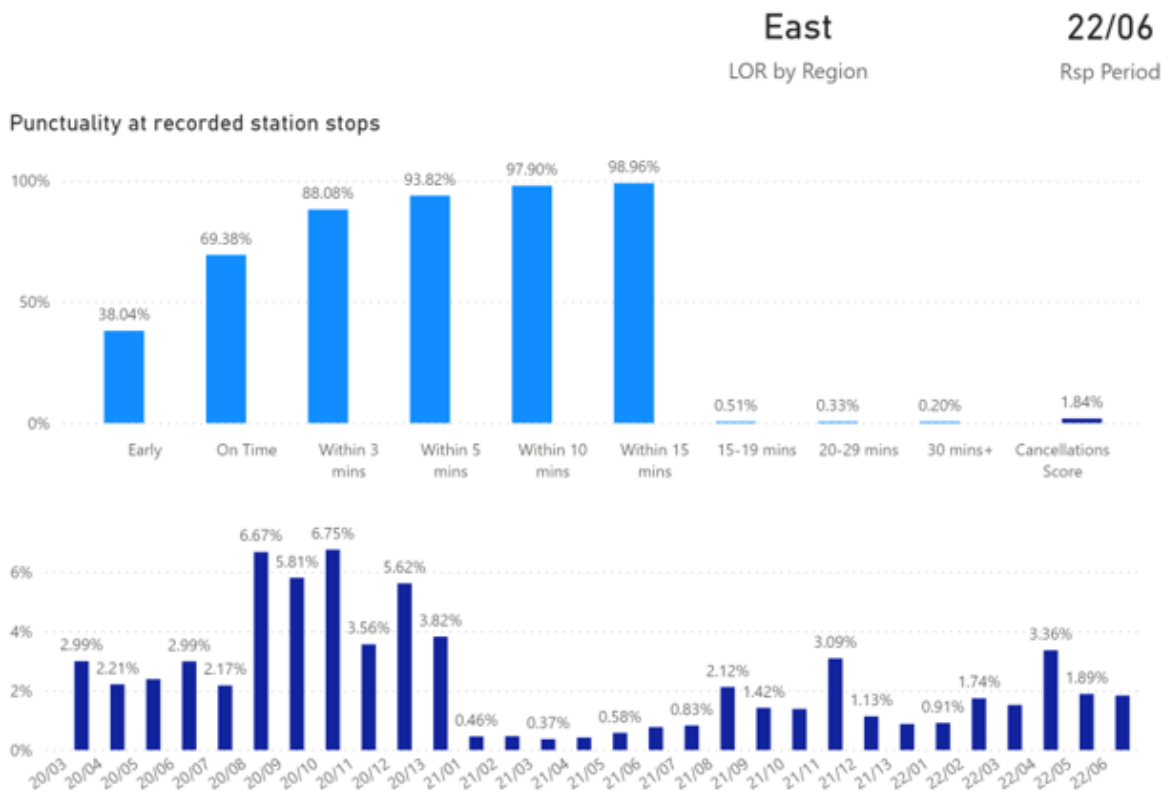
Time to 3 measure	27 Jun 2021 to 24 Jul 2021	25 Jul 2021 to 21 Aug 2021	22 Aug 2021 to 18 Sep 2021
Northern overall	89.0%	88.9%	88.0%
East Region	88.1%	88.6%	88.0%

Cancelled	27 Jun 2021 to 24 Jul 2021	25 Jul 2021 to 21 Aug 2021	22 Aug 2021 to 18 Sep 2021
Northern overall	3.3%	2.2%	2.23%
East Region	3.4%	1.9%	1.8%

Summary of Northern performance of last six 4-week reporting periods:



Northern punctuality at recorded station stops for period 6, and long-run cancellations trend – East Region:



More detailed information on Northern’s performance is available here:

<https://www.northernrailway.co.uk/corporate/performance>

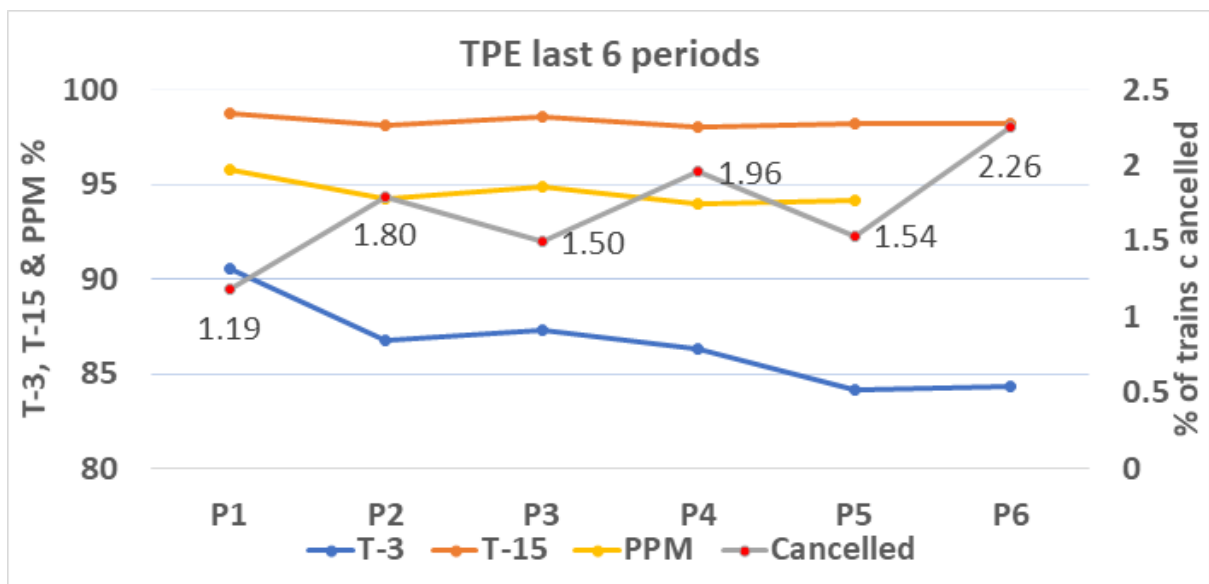
## TransPennine Express

TransPennine Express operates regular services between Liverpool, Manchester, West Yorkshire, North Yorkshire and the North East via Leeds and Huddersfield. Headline performance is summarised below.

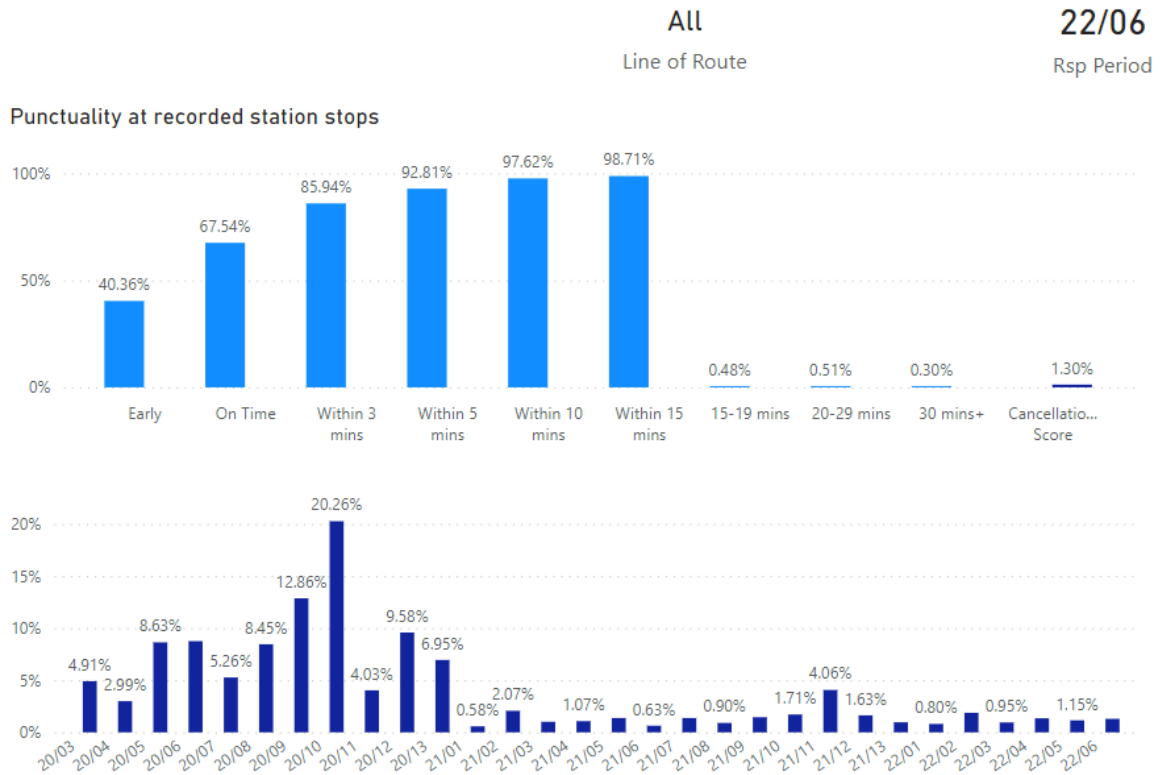
Time to 3 measures	27 Jun 2021 to 24 Jul 2021	25 Jul 2021 to 21 Aug 2021	22 Aug 2021 to 18 Sep 2021
Overall	86.3%	84.17%	84.31%

Cancelled	27 Jun 2021 to 24 Jul 2021	25 Jul 2021 to 21 Aug 2021	22 Aug 2021 to 18 Sep 2021
Overall	2.0%	1.54%	2.26%

TPE punctuality at recorded station stops and cancellations:



TPE punctuality at recorded station stops for period 6, and long-run cancellations trend – North Route:



More detailed information on TransPennine Express performance is available here: <https://www.tpexpress.co.uk/about-us/passengers-charter/performance-transparency>

## LNER

LNER operates regular services between West Yorkshire and London.

A summary of LNER's recent performance is available here:

<https://www.lner.co.uk/about-us/our-performance-figures/>

## Cross Country

Cross Country operates services between Scotland, the North East, West and South Yorkshire, the Midlands and South West.

A summary of Cross Country's recent performance is available here:

<https://www.crosscountrytrains.co.uk/about-us/key-business-performance-indicators>

## Grand Central

Grand Central operates trains between Bradford and London via Halifax, Mirfield, Brighouse, Wakefield and Pontefract.

A summary of Grand Central's recent performance is available here:

<https://www.grandcentralrail.com/about-us/how-are-we-doing/punctuality>